



## U.S. Coast Guard Sector Maryland-NCR

2401 HAWKINS POINT ROAD, BLDG 70

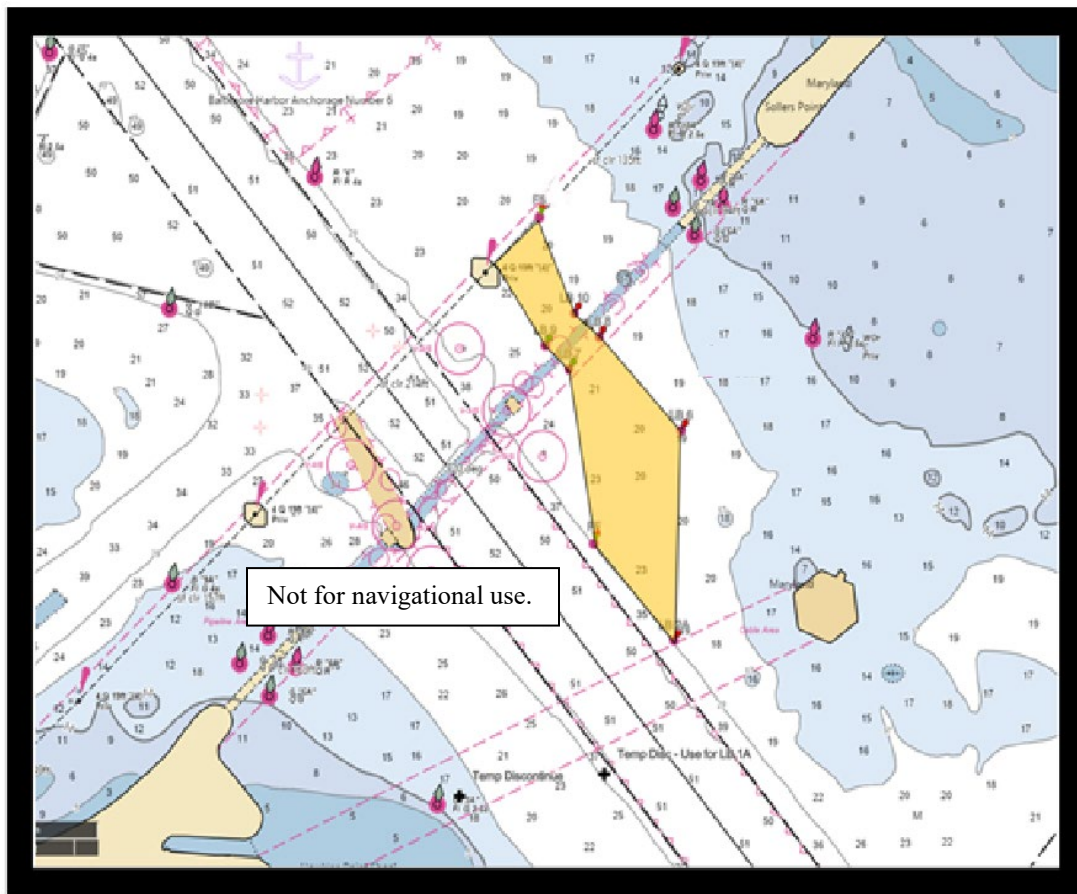
BALTIMORE, MD 21226-1791

[MTSRecoveryMDNCR@uscg.mil](mailto:MTSRecoveryMDNCR@uscg.mil)

### MARINE SAFETY INFORMATION BULLETIN 042-24

April 19, 2024

Port of Baltimore Safety Zone – Key Bridge Response 2024  
Two-Day Opportunity for Commercially Essential Vessels Through the Safety Zone



The Captain of the Port (COTP) has established the Fort Carroll Temporary Alternate Channel, located just southwest of the Sollers Point Temporary Alternate Channel. This channel will be open on Saturday, April 20<sup>th</sup> and Sunday, April 21<sup>st</sup> to afford commercially essential vessels the opportunity to transit. This action was part of a phased approach to opening the main federal channel. This temporary channel is marked with lighted aids to

navigation and will be limited to transit at the discretion of the COTP during daylight hours only. The temporary channel has a controlling depth of 20 feet, 300 horizontal clearance, and vertical clearance of 135 feet. The current 2,000-yard safety zone around the Francis Scott Key Bridge (see [MSIB 036-24](#)) remains in effect and is intended to protect personnel, vessels, and the marine environment. No vessel or person will be permitted to enter the safety zone without first obtaining permission from the COTP or a designated representative. The COTP is currently issuing a Broadcast Notice to Mariners (BNM) via VHF-FM marine channel 16. Mariners are requested to monitor the VHF channels 16 and 81A for the latest information.

You may not enter the safety zone described above unless authorized by the COTP or the COTP's designated representative. To obtain permission to enter the safety zone and transit through the temporary alternate channel, you must, **as early as possible but no less than 4 hours prior to getting underway**, contact the Marine Transportation System Recovery Branch at (505) 203-8141. These requests must be received between the hours of 8 a.m. to 6 p.m. For movements scheduled to occur before 10 a.m., requests must be received prior to 6 p.m. the previous day. **All transits are subject to response and recovery operations.**

As you approach the safety zone and prior to entry, contact the on-scene Patrol Commander on VHF channel 81A (157.075 MHz). Those in the safety zone must comply with all lawful orders or directions given to them by the COTP or the COTP's designated representative. The U.S. Coast Guard may be assisted in the patrol and enforcement of the safety zone by Federal, State, and local agencies.

#