



# SURVEY & INSPECTION

Product Brochure



PROVIDING A HIGH-QUALITY, TECHNOLOGY-ENABLED GLOBAL SURVEY & INSPECTION SERVICE BUILT ON A FOUNDATION OF QUALITY AND GOVERNANCE, THAT HELPS OUR CLIENTS ACHIEVE SAFETY, COMMERCIAL, AND ESG EXCELLENCE.

## SURVEY & INSPECTION

At Inchcape, we understand the critical importance of minimising risk in the maritime industry. Our comprehensive survey and inspection services are meticulously designed to protect your assets, enhance operational efficiency, and ensure regulatory compliance. We offer a holistic approach that covers every aspect of your vessel's operations, allowing you to focus on what you do best - growing your business.

By choosing Inchcape as your survey and inspection partner, you gain access to a global network of highly experienced surveyors, comprised of ex-seafarers, Master Mariners, Chief Engineers, and Naval Architects. This dedicated team operates under a robust governance framework, ensuring that risks are not only detected but mitigated with utmost precision.

What sets us apart is our unrivalled combination of global and local expertise. Seamlessly connecting with our in-house survey teams and an extensive network of partners worldwide, we leverage valuable local knowledge and professional operational excellence. Our single global contact point, integrated with World of Ports, guarantees a seamless experience throughout your entire voyage.

For any further information, please contact: [globalsurvey@iss-shipping.com](mailto:globalsurvey@iss-shipping.com)

- Asset Condition
- Bulk Cargo Operations
- Bunkering
- Cargo Operations
- Charter / Sale & Purchase
- Lifting Appliances
- Lloyds / P&I / Warranty
- Security



Request a Survey

## REASONS TO CHOOSE INCHCAPE

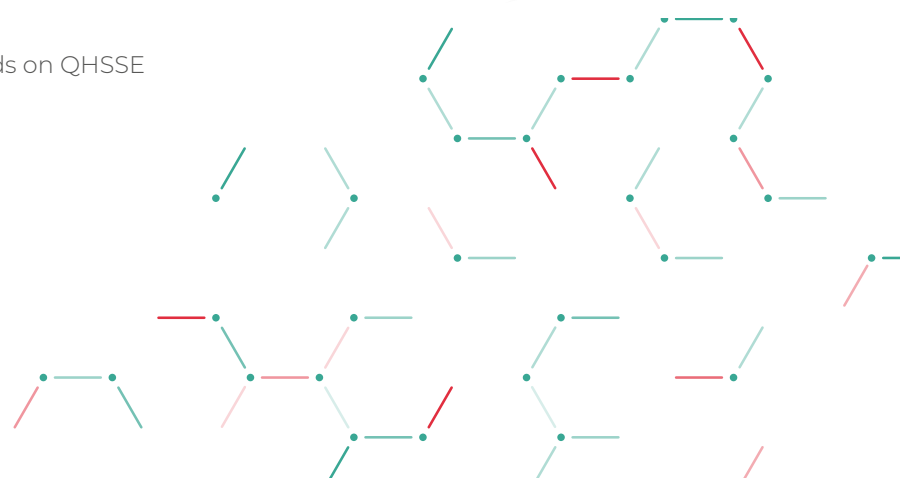
At Inchcape Shipping Services, our value proposition is simple yet powerful: we have the global and local network, combined with highly qualified and experienced survey teams, to be your objective and independent partner in protecting your commercial, safety, and environmental interests.

By choosing Inchcape, you gain access to a trusted partner who not only mitigates risks but also maximises your success. We offer a full suite of services, delivered by a global network of surveyors, to ensure seamless operations, significant cost savings, and peace of mind. With us, you can navigate the complexities of international trade with confidence, knowing that your interests are protected and your journey is smooth.

1. Reputation of the Inchcape brand, with a heritage of supporting the maritime industry since 1847.
2. Independent, impartial, objective, highly qualified and experienced survey team to represent your interests.
3. Strong market position with relationships with charterers, ship owners/operators, commodity traders, insurers, P&I clubs, and financiers.
4. Full suite of services tailored to your needs. Ability to expand the services provided as the needs of the industry evolve.
5. Focussed on commercial, safety and environmental risk mitigation.
6. Significant cost savings by using a single supplier to cover end-to-end services.
7. No added cost for potential launch waiting time or extending the scope of the survey to include on/off-hire.
8. Single point of contact 24/7.
9. Security of a trusted partner delivering the highest international standards on QHSSE and compliance.
10. DNV Quality Management Systems Certified.



### P&I CORRESPONDENTS



Asset Condition

Bulk Cargo Operations

Bunkering

Cargo Operations

Charter / Sale & Purchase

Lifting Appliances

Lloyds / P&I / Warranty

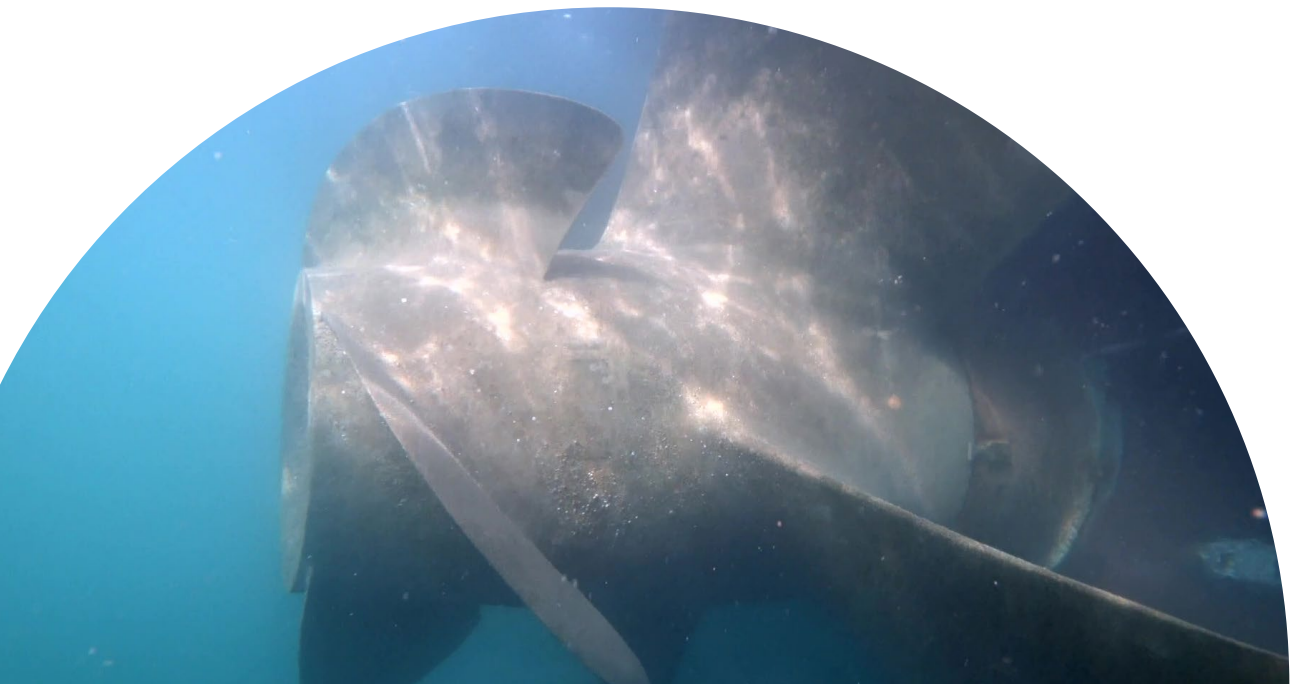
Security



Request a Survey

# ASSET CONDITION

Product Name	Service Description	Risk Being Mitigated
<p><b>Hull &amp; Machinery Survey</b></p>	<p>A comprehensive inspection and assessment of a vessel's hull, machinery, and related equipment</p>	<p>Hull and machinery surveys are conducted periodically throughout a vessel's life cycle to ensure compliance with charter, commercial, or safety standards. This survey helps shipowners, operators, and insurers make informed decisions regarding vessel maintenance, repairs, insurance coverage, and overall risk management.</p>
<p><b>Underwater Inspection</b></p>	<p>Underwater inspections are a visual examination of the underwater elements of the hull, performed by Inchcapes using ROVs or by divers, via our partner, to assess the condition of the underwater elements of the hull and components for the integrity of protective coatings, biofouling, or damage. Inchcape partners with leading paint manufacturers and hull cleaners to ensure minimal delay in resolving issues.</p>	<p>Underwater inspections are performed to assess the condition of the underwater elements of the hull and components for signs of biofouling, damage, corrosion, cracks, or structural issues that can impact the performance, efficiency, and safety of the vessel.</p>



Asset Condition

Bulk Cargo Operations

Bunkering

Cargo Operations

Charter / Sale & Purchase

Lifting Appliances

Lloyds / P&I / Warranty

Security



[Request a Survey](#)

# BULK CARGO OPERATIONS

Product Name	Service Description	Risk Being Mitigated
<b>Breakbulk Port Captain</b>	A Breakbulk Port Captain survey, also known as a Breakbulk Port Captain inspection, is a type of survey conducted by a Port Captain or a qualified surveyor to assess the suitability of a port or terminal for handling breakbulk cargo. Breakbulk cargo refers to non-containerised goods that are typically loaded individually or in smaller quantities onto a vessel.	Breakbulk Port Captaincy inspections assist in verifying the quality, condition and quantity of each break bulk item on behalf of the owner/receiver. Recommendations are made with reference to loading, stowage and securing, to prevent damage to cargo and vessel to reduce a clients exposure to commercial risk.
<b>Bulk Buyers Inspection</b>	Pre-shipment visual inspection of existing inventory on behalf of buyer/seller or insurers, to verify that the goods conform to contractual specification and to international export regulations and requirements. Can be completed at shippers yard, warehouse or wharf.	Bulk Buyers inspections include the inspection of bulk cargoes in order to ensure they meet the required specifications. This may including their sighting, measurement, sampling and testing. Failure to meet the required specifications may result in significant commercial risk.
<b>Draft Survey</b>	A draft survey is a method used to determine the weight/ volume of cargo loaded or discharged from a vessel by measuring the change in its draft (the vertical distance between the waterline and the bottom of the vessel) before and after loading or unloading.	The results of a draft survey are used for commercial purposes, such as verifying cargo quantities for billing purposes, calculating freight charges, or determining compliance with contractual specifications.
<b>Hold Survey – Cleanliness</b>	A hold cleanliness survey is an inspection conducted to assess the cleanliness and condition of cargo holds on a vessel to ensure the vessel is suitable to take its new cargo and that contamination will not occur.	Hold cleanliness surveys are crucial to prevent contamination of cargo during transportation, maintain product quality, and ensure compliance with safety and environmental regulations. They help identify any potential risks or issues that may impact the cargo's integrity or cause damage during transit.
<b>Hold Survey – Damage</b>	A hold damage survey is an inspection conducted to assess and document any damage or defects in the cargo holds of a vessel. It is typically performed after cargo operations, such as loading or discharging, to identify and record any structural damage, deterioration, or other issues that may have occurred during the process.	Hold damage surveys help identify structural vulnerabilities in the cargo holds that could compromise their integrity or pose risks during future cargo operations. The survey findings can be used by shipowners, charterers, insurers, and other stakeholders to assess liability, determine necessary repairs or maintenance actions, and ensure compliance with safety regulations.

Asset Condition

Bulk Cargo Operations

Bunkering

Cargo Operations

Charter / Sale & Purchase

Lifting Appliances

Lloyds / P&I / Warranty

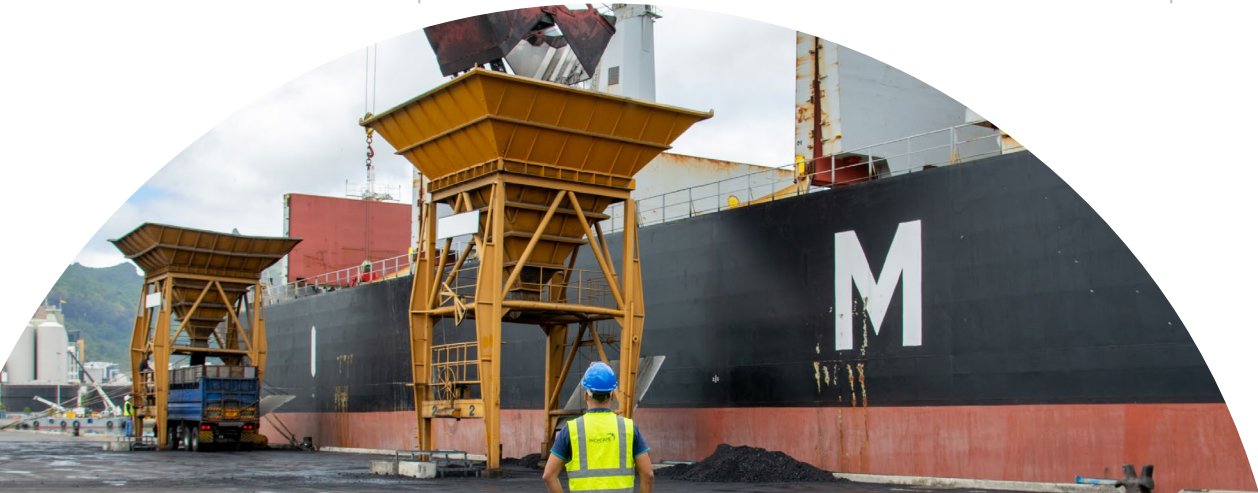
Security



[Request a Survey](#)

# BULK CARGO OPERATIONS

Product Name	Service Description	Risk Being Mitigated
<b>Hatch Cover Integrity</b>	A hatch cover integrity survey is an inspection conducted to assess the condition and effectiveness of the hatch covers on a vessel. Hatch covers are the closures that seal the cargo holds, ensuring the protection of cargo from external elements such as water, moisture, and weather conditions. This survey is typically performed to verify that the hatch covers are in good working order and capable of providing a watertight seal.	Hatch cover integrity surveys are crucial for maintaining the safety and protection of cargo during transportation. They help identify any potential risks of water ingress or damage to cargo due to faulty or ineffective hatch covers. The survey findings assist shipowners, charterers, and operators in ensuring compliance with safety regulations, addressing maintenance needs, and taking appropriate actions to maintain the integrity of the hatch covers.
<b>Loadmaster / Port Superintendent</b>	The Loadmaster/Port Superintendent monitors the loading and/or discharge of bulk cargo on a vessel. A Loadmaster/Port Superintendent is responsible for overseeing the safe and efficient loading, securing, and unloading of bulk cargoes, such as grains, ores, coal, fertilisers, or other dry or liquid bulk materials that are loaded directly into the cargo holds without individual packaging.	The Loadmaster/Port Superintendent is essential for ensuring the safe and efficient loading and/or discharge of bulk cargoes in accordance with industry standards, regulatory requirements, and specific contractual agreements. By conducting thorough inspections and monitoring the loading process, Loadmasters contribute to the prevention of cargo damage, loss, or safety incidents during transportation.
<b>Petro / Chemical Cargo Operations</b>	Petro/Chemical Cargo Operations service is conducted to monitor the loading or discharge of liquid cargoes to/from a vessel.	Petro / Chemical Cargo Operations service is performed to ensure that the liquid cargo is being handled safely, efficiently, and in compliance with industry standards.



- Asset Condition
- Bulk Cargo Operations
- Bunkering
- Cargo Operations
- Charter / Sale & Purchase
- Lifting Appliances
- Lloyds / P&I / Warranty
- Security



Request a Survey

# BULK CARGO OPERATIONS

Product Name	Service Description	Risk Being Mitigated
<p><b>Pipe and Steel Survey</b></p>	<p>A pipe and steel survey is conducted to assess the condition, quantity, and handling of the cargo during transportation or storage to ensure that they are handled properly, meet quality standards, and are in suitable condition for their intended use.</p>	<p>The pipe and steel cargo survey is important for maintaining quality control, preventing damage to the cargo, and ensuring accurate documentation of quantities received or delivered. Specific procedures and requirements may vary depending on the type of pipes and steel, transportation mode (e.g., vessel, truck, rail), and industry best practices.</p>
<p><b>Stockpile Survey</b></p>	<p>A stockpile survey is conducted to determine the quantity, quality, and condition of materials or goods stored in a stockpile. It involves measuring and documenting the volume or weight of the stockpile, inspecting its contents, and providing relevant information for inventory management or other purposes.</p>	<p>Stockpile surveys are performed for financial reporting, supply chain management, quality control, compliance with regulations, or general inventory management purposes to protect the purchaser from commercial risk.</p>
<p><b>Hot Briquetted Iron (HBI) / Direct-reduced iron (DRI) cargo survey</b></p>	<p>Hot Briquetted Iron (HBI) / Direct-reduced iron (DRI) cargo survey is an inspection and assessment that covers verification of cargo quantity and quality; vessel fitness; vessel preparedness to load; monitoring of loading operations including continuous monitoring of all critical parameters; hold purging with Nitrogen gas as well as issuance of the necessary certificates. The process ensures safe handling of cargo in compliance with the requirements laid down by the local Port Authority and the IMO IMSBC code.</p>	<p>The survey helps to ensure the correct quantity and quality of HBI/DRI cargo is delivered ensuring contractual specifications are met, and limiting the chance of claims. The survey also identifies and addresses potential risks related to transportation, storage, and handling, such as moisture ingress, oxidation, and heat generation, to prevent safety incidents and material degradation, ensuring compliance with relevant regulations and safety standards.</p>



Asset Condition

Bulk Cargo Operations

Bunkering

Cargo Operations

Charter / Sale & Purchase

Lifting Appliances

Lloyds / P&I / Warranty

Security



[Request a Survey](#)

# BUNKERING

Product Name	Service Description	Risk Being Mitigated
<b>Bunker Quantity Survey (BQS)</b>	A Bunker Quantity Survey (BQS) is conducted to determine the quantity and quality of bunker fuel received by a vessel. It involves precise measurements and calculations to accurately determine the amount of fuel provided.	BQS is a risk mitigation tool to prevent variances in fuel quantity and quality between the supplier and receiver. Bunker quantity surveys are crucial for ensuring transparency, preventing fraud, and maintaining accurate records of fuel consumption on vessels. They help verify that the amount of bunker fuel received matches what was contracted or agreed upon, ensuring fair transactions between parties involved.
<b>Bunker Sampling &amp; Analysis</b>	Bunker Sampling & Analysis involves the collection of fuel samples from bunkering operations and conducting laboratory tests to assess the quality and compliance of the fuel with specified standards or regulations. This process is crucial for ensuring that the bunker fuel meets the required specifications and does not pose any risks to the vessel's operation or the environment.	Bunker Sampling & Analysis is a crucial quality control tool to ensure that the bunker fuel meets quality standards, regulatory requirements, and operational needs. Potential issues such as fuel contamination, excessive sulphur content, or other quality concerns can be identified early on, allowing for appropriate actions to be taken to ensure safe and efficient operations. This survey protects your commercial interests and minimises the cost and time associated with claims.
<b>Forensic Bunker Survey</b>	Forensic Bunker Surveys are a specialised inspection conducted to determine the cause, extent, and consequences of a bunker-related incident. It involves a detailed examination and analysis of the bunker fuel storage and handling systems, as well as associated equipment and infrastructure.	Forensic bunker surveys improve safety standards, environmental performance, operational efficiency, regulatory compliance, and reduce commercial risk. This survey helps stakeholders understand the causes of bunker incidents, take corrective actions, and prevent future occurrences, ultimately reducing risks and ensuring safer and more sustainable bunker operations.
<b>On/Off-Hire Bunker Survey</b>	The On/off-hire Bunker Survey is performed to assess the bunker fuel present on a vessel at the time of its delivery (on-hire) or redelivery (off-hire) to/from a charterer or owner. The purpose is to establish an accurate baseline for fuel consumption and to ensure that both parties have a clear understanding of the fuel inventory at the start or end of a charter period, and address any discrepancies that may exist.	The on/off-hire bunker survey provides an objective assessment of fuel quantities, which can be crucial for determining fuel costs, reconciling any discrepancies, and resolving potential disputes between charterers and vessel owners. It helps ensure transparency and accuracy in fuel measurement during vessel charters.

- Asset Condition
- Bulk Cargo Operations
- Bunkering**
- Cargo Operations
- Charter / Sale & Purchase
- Lifting Appliances
- Lloyds / P&I / Warranty
- Security



[Request a Survey](#)



# CARGO OPERATIONS

Product Name	Service Description	Risk Being Mitigated
<b>Cargo Handling &amp; Stowage</b>	The Cargo Handling & Stowage surveys are conducted to plan and monitor the handling and stowage of cargo on a vessel to ensure that proper procedures are followed, cargo is handled safely, and it is stowed securely to prevent damage during transportation.	Cargo Handling & Stowage surveys are crucial for ensuring the safe and efficient transportation of goods. They help identify potential risks, prevent damage to cargo, ensure vessel stability, compliance with industry standards and contractual obligations, and maintain the safety of crew members.
<b>Cargo Lashing Supervision</b>	Cargo Lashing Supervision is performed to oversee and verify the proper securing of cargo on a vessel to ensure its stability and safety during transportation. It involves the supervision of cargo lashing operations and the issuance of a certificate or document confirming that the cargo has been adequately secured.	Cargo lashing supervision is essential to prevent cargo damage, ensure vessel stability, and maintain the safety of crew members and the marine environment. By verifying the proper securing of cargo, these processes help mitigate risks associated with shifting loads, accidents, or cargo-related incidents during transit.
<b>Cargo Logistics</b>	A Cargo Logistics Survey is conducted to evaluate the logistics aspects of cargo transportation and distribution. It involves analysing various factors related to the movement of goods, including transportation modes, routes, storage facilities, handling procedures, and overall supply chain efficiency. The purpose of a cargo logistics survey is to identify potential bottlenecks, inefficiencies, or areas for improvement in the cargo logistics process.	Cargo Logistics surveys help identify areas where improvements can be made to enhance the efficiency, reliability, and cost-effectiveness of cargo transportation and distribution. By analysing various logistics components, these surveys contribute to streamlining operations, reducing costs, minimising delays, and ensuring customer satisfaction.



- Asset Condition
- Bulk Cargo Operations
- Bunkering
- Cargo Operations
- Charter / Sale & Purchase
- Lifting Appliances
- Lloyds / P&I / Warranty
- Security



[Request a Survey](#)

# CHARTER / SALE & PURCHASE

Product Name	Service Description	Risk Being Mitigated
<b>Sale &amp; Purchase (S&amp;P)</b>	A Sale and Purchase (S&P) inspection is an assessment conducted on a vessel or ship during the process of buying or selling it. The purpose of this survey is to evaluate the condition, seaworthiness, and overall value of the vessel. It provides crucial information to the buyer and seller, helping them make informed decisions regarding the sale or purchase.	A Sale and Purchase (S&P) inspection is a critical step in the process of buying or selling a vessel. It helps ensure transparency, provides an objective evaluation of the vessel's condition, and assists in determining a fair price. By conducting this survey, both parties can make informed decisions and mitigate potential risks associated with the transaction.
<b>Ship Vetting</b>	A Ship Vetting inspection is an assessment conducted to evaluate the suitability and safety of a ship for a specific task or operation and to ensure the vessel meets certain standards, complies with regulations, and poses minimal risk in terms of safety, environmental impact, and operational performance.	Ship Vetting inspections are typically conducted as part of a pre-charter assessment or ongoing vetting process to ensure that vessels meet the requirements and standards set by charterers, oil companies, or other entities involved in maritime operations. These inspections help mitigate risks, enhance safety, protect the environment, and maintain operational efficiency within organisations.
<b>On/Off-Hire Condition Survey</b>	The On/off-hire Condition Survey is performed to assess the condition of a vessel at the time of its delivery (on-hire) or redelivery (off-hire) to/from a charterer or owner. The survey will document the condition of the vessel or equipment and determine any changes or damages that may have occurred during the charter period.	The purpose of an On/Off-Hire Survey is to establish a baseline condition for the vessel or equipment before it enters or leaves a charter period. It helps protect both parties' interests by documenting any pre-existing damages or changes that may affect liability for repairs or financial settlements. Additionally, it ensures transparency and facilitates smooth transitions between charterers or owners, providing an accurate record of the vessel or equipment's condition at the time of handover or redelivery.

Asset Condition

Bulk Cargo Operations

Bunkering

Cargo Operations

Charter / Sale & Purchase

Lifting Appliances

Lloyds / P&I / Warranty

Security



Request a Survey



# LIFTING APPLIANCES

Product Name	Service Description	Risk Being Mitigated
<b>Crane Inspection</b>	A Crane Inspection is conducted to ensure the safe and reliable operation of the ship's cranes, which are essential for cargo handling, lifting operations, and other tasks on board. Specific requirements for ship crane inspections may vary depending on factors such as the type of crane (e.g., gantry crane, deck crane), its capacity, the vessel's flag state regulations, classification society rules, and any additional requirements set by charterers or port authorities.	Ship crane inspections are crucial for maintaining the safety and efficiency of cargo handling operations on board ships. By conducting regular inspections, shipowners can identify and address potential issues with their cranes, ensuring that they are in good working condition and comply with relevant regulations and standards.
<b>Wire Inspection</b>	A Wire Rope inspection is a thorough assessment conducted on the wire ropes used on a ship or vessel. Wire ropes are critical components in various maritime applications, including lifting operations, mooring, towing, and anchoring. The purpose of this inspection is to ensure the integrity, strength, and safety of the wire ropes.	Regular wire rope inspections are essential to identify potential weaknesses or defects that could compromise the safety and reliability of lifting and mooring operations on board ships. By conducting these inspections, shipowners can ensure that their wire ropes are in good condition, properly maintained, and meet the required standards for safe maritime operations.



- Asset Condition
- Bulk Cargo Operations
- Bunkering
- Cargo Operations
- Charter / Sale & Purchase
- Lifting Appliances
- Lloyds / P&I / Warranty
- Security



Request a Survey

# LLOYDS / P&I / WARRANTY

Product Name	Service Description	Risk Being Mitigated
<b>Lloyds Agency</b>	Lloyd's Agency ship inspections are performed on behalf of shipowners, charterers, insurers, and Protection and Indemnity (P&I) clubs. Inchcapes Lloyd's Agency surveyors conduct inspections objectively and provide accurate and reliable information to assist clients in making informed decisions or resolving issues related to the ship for issues such as claims adjustments, or cargo disputes.	As an appointed Lloyds Agent, Inchcape surveyors provide independent marine surveying and claims adjusting services to the global insurance industry and its customers to support decision-making processes, risk management, claims handling, and compliance with industry standards.
<b>Marine Warranty Survey (MWS)</b>	A Marine Warranty Survey (MWS) is conducted to assess and provide independent verification of the safety and feasibility of marine operations. These surveys are typically required by insurance companies, project owners, or other stakeholders to mitigate risks associated with high-value or complex marine operations.	Marine Warranty Surveys (MWS) play a crucial role in minimising risks associated with complex marine operations. By engaging Inchcape as an independent MWS, project owners, insurers, and other stakeholders can gain confidence in the safety and reliability of the planned operations. The MWS provides expert assessment, verification, and certification to help ensure that the marine operation is executed in a manner that protects assets, personnel, and the environment.
<b>Protection &amp; Indemnity (P&amp;I) Survey</b>	Protection and Indemnity (P&I) surveys are an objective inspection conducted by a surveyor on behalf of a P&I club. P&I clubs are mutual insurance associations that provide liability coverage to shipowners and operators for various risks associated with the operation of ships.	P&I surveys are typically conducted periodically as part of the risk management and loss prevention efforts of P&I clubs. The frequency and scope of the surveys may vary depending on factors such as the ship's type, age, trading area, and claims history. The surveys help P&I clubs assess the risks associated with insuring a particular ship and determine appropriate premiums.
<b>Proof &amp; Protection of Asset</b>	The Proof & Protection of Asset survey is to establish an accurate representation of the commodity's quality, quantity, and condition. This information is often required for trade, insurance, legal, or regulatory purposes.	Proof & Protection of Asset survey plays a crucial role in verifying the quality, quantity, and condition of commodities, reducing risks, facilitating trade, and ensuring compliance with contractual and regulatory requirements. They provide valuable documentation and evidence that supports informed decision-making and helps maintain integrity in commodity markets.

- Asset Condition
- Bulk Cargo Operations
- Bunkering
- Cargo Operations
- Charter / Sale & Purchase
- Lifting Appliances
- Lloyds / P&I / Warranty
- Security



[Request a Survey](#)

# SECURITY

Product Name	Service Description	Risk Being Mitigated
<b>Citadel Inspections</b>	A ship citadel inspection involves a detailed examination of the citadel, which is a heavily fortified and protected area of a ship designed to provide a secure space for personnel in the event of an attack or emergency. Citadel inspections are particularly relevant for ships operating in high-risk areas where there is a potential for piracy or armed attacks.	A citadel inspection mitigates risk associated with structural integrity, access control, emergency equipment, security measures, emergency procedures, and communication systems to ensure the secure area is well-maintained, fully operational, and capable of providing a safe haven for the crew in case of an emergency or security threat. This is particularly relevant for vessels operating in regions where piracy or armed attacks are a concern, as the citadel serves as a last line of defence to protect the crew and essential ship functions.
<b>Ship Security Assessment (SSA)</b>	Comprehensive evaluation of the security measures and protocols implemented on a vessel to safeguard it from security threats and risks. This assessment is a critical component of the International Ship and Port Facility Security (ISPS) Code, which is an international maritime security standard established by the International Maritime Organisation (IMO).	A Ship Security Assessment (SSA) is designed to identify and mitigate risks including unauthorised access and boarding, piracy and armed robbery, stowaways, terrorism, cyber security threats, cargo security, insider threats, emergency response to security incidents, environmental threats, use of weapons and dangerous goods, kidnapping and hostage situations. The goal of a Ship Security Assessment is to ensure that the ship is well-prepared to address a range of security risks, maintaining the safety of the vessel, its crew, passengers, and cargo.
<b>Anti-Piracy Ship Security Assessment (APSSA)</b>	A specialised evaluation focused on identifying and mitigating security risks related to piracy threats for a specific vessel. The goal of an anti-piracy ship security assessment is to enhance the vessel's security measures and protocols to minimise the risk of piracy incidents.	An Anti-piracy Ship Security Assessment (APSSA) is designed to identify and mitigate security risks associated with pirate attacks include pirate boarding and unauthorised access, kidnapping and hostage situations, firearms and weapons, safe navigation practices, crew training and awareness, early detection and warning systems, use of non-lethal deterrents, coordination with security forces, security drills and exercises, and cyber security threats.  By addressing these specific risks, ship operators can implement targeted measures to enhance the ship's ability to navigate piracy-prone areas safely and respond effectively to potential threats.

- Asset Condition
- Bulk Cargo Operations
- Bunkering
- Cargo Operations
- Charter / Sale & Purchase
- Lifting Appliances
- Lloyds / P&I / Warranty
- Security

Request a Survey

# SECURITY

Product Name	Service Description	Risk Being Mitigated
<p><b>Ship Security Plan (SSP) Review</b></p>	<p>A systematic examination and assessment of the effectiveness, adequacy, and compliance of a vessel's Ship Security Plan. The Ship Security Plan is a comprehensive document developed to ensure the security of ships and port facilities in accordance with the International Ship and Port Facility Security (ISPS) Code, established by the International Maritime Organisation (IMO). The Ship Security Plan review is typically conducted periodically, and it may be triggered by changes in the ship's operation, security incidents, or regulatory updates.</p>	<p>A Ship Security Plan (SSP) review is conducted to ensure a ship's security measures are effective, up-to-date, and compliant with international security standards, particularly those established by the International Ship and Port Facility Security (ISPS) Code. Some of the threats the assessment aims to mitigate include piracy and armed robbery, unauthorised access, stowaways, sabotage and terrorism, cargo security, cyber security threats, emergency Response, weapons and dangerous goods, insider threats, and environmental threats. By addressing these threats through a systematic SSP review, ship operators can enhance the vessel's overall security posture, comply with international regulations, and contribute to the safety and security of maritime operations.</p>
<p><b>Port Security Assessment (PSA) per ISPS</b></p>	<p>A thorough examination of the security measures and procedures implemented at a port facility to ensure compliance with the International Ship and Port Facility Security (ISPS) Code. The ISPS Code is an international maritime security standard established by the International Maritime Organisation (IMO) to enhance the security of ships and port facilities.</p>	<p>A Port Security Assessment (PSA) identifies and mitigates a variety of port security risks which can vary depending on the location, type of port, and prevailing security concerns. The common risks a PSA aims to mitigate include terrorism, unauthorised access, smuggling and trafficking, sabotage, cyber security threats, cargo security, biological and chemical threats, environmental threats, public health risks and insider threats. By identifying and addressing these risks, a PSA aims to enhance the overall security posture of a port facility, protect its assets, and contribute to the safety and resilience of maritime operations.</p>



- Asset Condition
- Bulk Cargo Operations
- Bunkering
- Cargo Operations
- Charter / Sale & Purchase
- Lifting Appliances
- Lloyds / P&I / Warranty
- Security

Request a Survey

# SECURITY

Product Name	Service Description	Risk Being Mitigated
<b>Best Management Practice (BMP) Inspections</b>	<p>A BMP inspection involves a detailed examination of the vessel and the specific security hardening measures onboard, in order to identify any potential weakness. The inspection is carried out in person by one of our trained inspectors. Due to the methodical approach of the BMP inspections, they are relevant for all vessels operating in high-risk areas and cover a wide range of threats including hostile approach, piracy, drones, missile strikes, UAV, WBIED, theft and robbery.</p>	<p>The BMP security inspection is the cornerstone of a vessel's Ship Security Plan (SSP) and aids in refining the Ship's Security Assessment (SSA). A BMP inspection mitigates risk associated with hostile approach, access control, attempted unlawful boarding, missile strikes, UAVs, drones, structural integrity, emergency equipment, emergency procedures, communications equipment, citadel hardening, and HSSE. This is relevant for vessels operating in any region.</p>
<b>K9 Searches</b>	<p>International drug trafficking has become a major global problem. Canine drug detection dogs play a crucial role in combating this form of criminal activity. The dog handler and drug detection dog team constitute an effective and proficient technology that is cost-effective and proven. Our Anti Narcotic K9 teams can identify and locate illegal drugs, such as narcotics and other controlled substances.</p>	<p>By investing in comprehensive and customised K9 services, Masters and crews can mitigate the risk of narcotics being hidden onboard upon departure. The Anti-Narcotics / K9 search mitigates the risk associated with Cannabis, Cocaine, Heroin, Methamphetamine, and other restricted substances. In addition to the K9 detection abilities, our dogs and handlers act as a highly visible deterrent, minimising the chances of criminal activity taking place. This is relevant for any vessels sailing from a High-Risk Port.</p>
<b>Stowaway Searches</b>	<p>A stowaway on a ship is someone who boards the vessel without the consent of the shipowner, the master or any other responsible person and is found after the ship has left the port of call or during the unloading process at the port of arrival. Our dedicated stowaway detection / search teams are trained to look for individuals who fall in this category and work in conjunction with the ships crew to ensure all potential hiding locations are identified and thoroughly searched.</p>	<p>By choosing to utilise one of our dedicated stow away search teams crews will have the ability to mitigate risk associated with illegal boarding, delays, threat to master and crew, disembarkation / repatriation, port fines and additional legal implications by searching areas such as cargo holds, funnel casings, chain lockers, storerooms, cabins, crane cabs, mast houses, engine room bilges and other known hideout locations. This is relevant for any vessels sailing from a High-Risk Port.</p>

- Asset Condition
- Bulk Cargo Operations
- Bunkering
- Cargo Operations
- Charter / Sale & Purchase
- Lifting Appliances
- Lloyds / P&I / Warranty
- Security

Request a Survey



# ACCREDITATIONS



For more information on our services and global network, visit [iss-shipping.com](http://iss-shipping.com).